

illustrate a particular period, of the locality or of different types of fortification. The handbook has eight topics with activity sheets. Age range 9-13, with adaptable ideas for GCSE study.

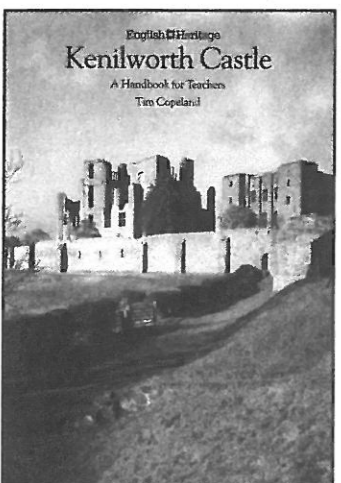
36 pages, card covers, A4 size, 1990.

ISBN 1-85074-261-8

Price: £2.50

Quote Code: XN 09687

See also Videos ▶



Kenilworth Castle
Tim Copeland **NEW**

Kenilworth Castle, Warwickshire, was owned by some of the most powerful individuals in English history, including Simon de Montfort, John of Gaunt and Robert Dudley, Earl of Leicester; it was also visited by Queen Elizabeth I. The site has much to offer teachers and children exploring the past, including a well-equipped Education Centre. The handbook focuses on the castle as fortress and palace, and the processes that caused its decay. Age range 9-13.

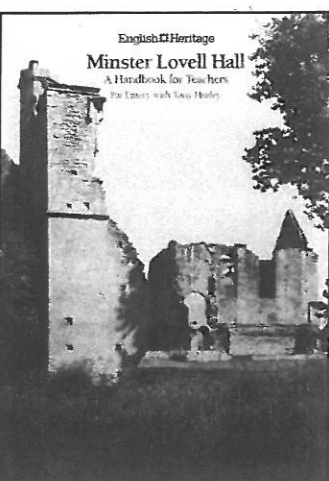
36 pages, card covers, A4 size, 1990.

ISBN 1-85074-292-8

Price: £2.50

Quote Code: XN 09689

See also Posters ▶



Minster Lovell Hall
Pat Emery
with Tony Hurley **NEW**

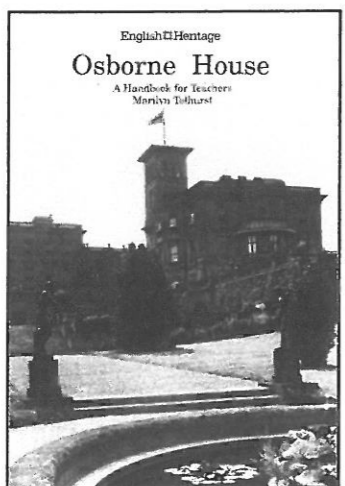
Minster Lovell Hall, Oxfordshire, was once the residence of the Lovells, one of the most important and wealthy families in fifteenth century England. The ruined site contains all the elements of a typical late medieval manor house, and the surrounding medieval village survives virtually intact. Age range 9-13. The handbook contains information and activity sheets with teachers notes.

16 pages, card covers, A4 size, 1990.

ISBN 1-85074-290-1

Price: £2.00

Quote Code: XN 09688



Osborne House
Marilyn Tolhurst **NEW**

Based on Queen Victoria's seaside home on the Isle of Wight, a number of approaches are suggested including role play, looking at the house as an example of Victorian social life and seeing it as a contemporary conservation problem. Ideas for following up include recipes,

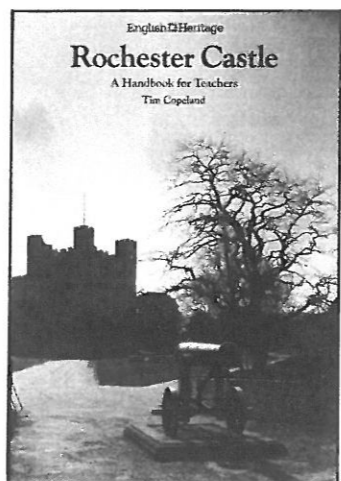
instructions for an optical toy and pin-hole photography. The book provides extensive historical background and includes guides to the rooms, aimed mainly at the 9-13 age range with ideas for GCSE level work. 64 pages, card covers, A4 size, 2nd edition, extensively revised, 1990.

ISBN 1-85074-289-8

Price: £3.50

Quote Code: XN 09168

See also Slide Packs ▶



Rochester Castle
Tim Copeland **NEW**

Rochester Castle, Kent, is one of the finest examples of a Norman castle in the country. Discovery of its design and purpose can involve learning skills such as observation, recording, deduction, measuring, estimating and language, which extend across the curriculum. The five activity sheets feature the cartoon characters of Sir Round and Lady Like to highlight key aspects in an entertaining way. Age range 9-13, and adaptable for GCSE study.

36 pages, card covers, A4 size, 1990.

ISBN 1-85074-217-0

Price: £2.50

Quote Code: XN 09170

St Augustine's Abbey, Canterbury
Stephen Scoffham

St Augustine's, built 598 AD, is the oldest Anglo-Saxon abbey in England. The handbook is divided into three sections: material for teachers including a brief history of the site and a tour; twelve copyright-free class sheets to help children prepare for their visit; and nine trail sheets to help children to get the most from their on-site work. It includes ideas for data collection; extracts from orig-

inal documents, a time chart and reconstruction drawings. 48 pages, card covers, A4 size, 1988.

ISBN 1-85074-196-4

Price: £2.50

Quote Code: XN 09171

St Catherine's Oratory
Elizabeth Newbery

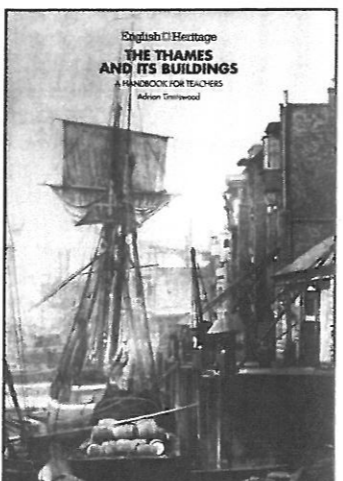
Based on the site overlooking Blackgang Chine of the Isle of Wight, which was built in the early 14th century as a chapel-cum-lighthouse, the handbook also covers a history of lighthouses in general. It includes ideas to relate lighthouses to the arts and science curriculum and on-site activity sheets take the form of an archaeological survey record and a light-hearted sheet on smuggling.

12 pages, card covers, A4 size, plus 2 activity sheets, 1987.

ISBN 1-85074-147-6

Price: £1.75

Quote Code: XN 09172



The Thames and its Buildings
Adrian Tinniswood **NEW**

Marble Hill House, The Chapter House Westminster Abbey, the Jewel Tower, London Wall, Winchester Palace and Hadleigh Castle are all covered in this pack for classes studying the Thames. A photographic trail, a DIY guidebook and a landscape survey are just some of the lively ideas that together with primary sources and varied illustrations will provide a useful stimulus for planning work.

36 pages, card covers, A4 size, 1990.

ISBN 1-85074-282-0

Price: £3.50

Quote Code: XN 09690

Tilbury Fort
Frankie Dale

Tilbury Fort is the best preserved and in many ways the finest surviving example of late seventeenth century military architecture in England. It offers a good introduction to a study of fortifications and its dramatic pentagonal design could stimulate a variety of cross-curricular activities. The handbook, widely illustrated and with seven activity sheets, is aimed at the 9-13 range but ideas could be adapted for GCSE study.

36 pages, card covers, A4 size, 1989.

ISBN 1-85074-216-2

Price: £2.50

Quote Code: XR 09198

See also Posters ▶

Totnes Castle
Stewart Brown
and Robin Clutterbuck

This handbook includes historical background to the Devon Castle and its builder, Juhel, and project themes such as invasion, the use of evidence and the building of the castle. There are plans of how to make a Norman motte and a set of cards for a role play activity 'Murder in the Castle'. It includes two interacting site trails for 'Normans' and 'Saxons' and an archaeological survey sheet.

28 pages, card covers, A4 size, plus 3 activity booklets, 1988.

ISBN 1-85074-200-6

Price: £2.50

Quote Code: XN 09397

See also
Family Discovery Packs ▶

Yarmouth Castle
Elizabeth Newbery

Yarmouth Castle was built to defend the Isle of Wight following the French invasion of 1545. After a brief introduction to the coastal defences of Southern England the handbook contains detailed information about 16th century methods of attack and defence. There are ideas for cross-curricular studies, a cut-out model; a survey sheet and an activity based on the theme of pirates.

12 pages, card covers, A4 size, plus 3 activity sheets, 1987.

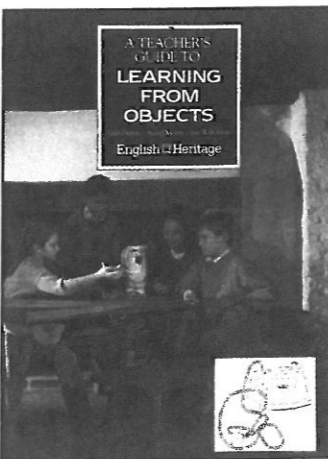
ISBN 1-85074-149-2

Price: £1.75

Quote Code: XN 09174

EDUCATION ON SITE

These books aim to show how historical resources can be used as a basis of study in specific areas of work across many curriculum subjects. Each is packed with practical exercises and ideas to aid understanding for groups at different levels.



A Teachers Guide to Learning From Objects
Gail Durbin, Susan Morris and Sue Wilkinson. **NEW**

This book is for teachers who want to encourage children to learn from physical things. It suggests a method of analysing objects and a range of classroom games to help develop the skills that are necessary for fieldwork at sites or museums. The benefits of using objects and the issues raised by them are also covered.

36 pages, card covers, A4 size, 1990.

ISBN 1-85074-259-6

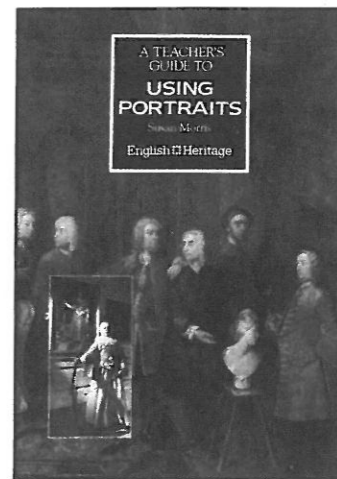
Price: £3.50

Quote Code: XP 09692

A Teacher's Guide to Using Portraits
Susan Morris

Portraits are the gossip columns, newflashes, party political broadcasts and family albums of the past. They are found in every country house and museum and this book aims to help teachers decode some of the messages they contain. The book contains ideas and practical exercises for groups that can be used from infant to examination level and in a wide range of curriculum subjects as diverse as history and science.

48 pages, card covers, A4 size,



1989.
ISBN 1-85074-231-6

Price: £3.50

Quote Code: XP 09179

See also Slide Packs ▶

Living History: reconstructing the past with children
John Fairclough
and Patrick Redsell

This book on drama and role play projects details events at Heveningham Hall and Orford Castle, in Suffolk, and explains how schools might carry out their own projects. A useful resource list is also included.

36 pages, card covers, A4 size, 1985.

ISBN 1-85074-073-9

Price: £1.50

Quote Code: XP 09178

See also Videos ▶

FAMILY DISCOVERY PACKS

Written primarily for adults with children, these packs would also be a useful resource for teachers planning a site visit. Two fun activity sheets which use detective observation skills and a wallchart are included in each pack.

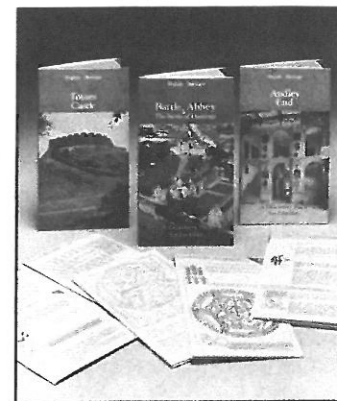
Audley End
Newbery and England

This is based on Audley End in Essex, a palatial Jacobean house and one of our most popular sites. Published 1989.

ISBN 1-85074-218-9

Price: £1.95

Quote Code: XO 09175



Battle Abbey
Gail Durbin,
Liz Hollinshead,
Ross Jellicoe and Peter Stone **NEW**

Founded by William the Conqueror on the site of the Battle of Hastings, the Abbey remains include the gatehouse and east range as well as the battlefield itself. Published 1990.

ISBN 1-85074-267-7

Price: £1.95

Quote Code: XO 09691

Rievaulx Abbey
Newbery and England

This Cistercian abbey in North Yorkshire is one of the most spectacular monastic ruins in the country. It has a visitors centre and Education Centre. Published 1987.

ISBN 1-85074-175-1

Price: £1.95

Quote Code: XO 09176

See also Videos ▶

Totnes Castle
Stewart Brown
and Robin Clutterbuck **NEW**

The wallchart in this pack for the Devon Castle contains ideas on how to make chain mail or design a heraldic shield. Published 1989.

ISBN 1-85074-284-7

Price: £1.95

Quote Code: XO 09177

See also
◀ Handbooks For Teachers

GENERAL BOOKS

Ration Book Recipes
Some Food Facts 1939-1954
Gill Corbishley **NEW**

The demands and restrictions of rationing in the 'austerity



19th century Food and Cooking
ISBN 1-85074-085-2
Quote Code: BK 3709
44-52 pages, card covers, A5 size, 1985.
Price: £1.50 each or £9.95 for the boxed set.

Life on a Royal Estate: a document pack for Osborne House
Marilyn Tolhurst

This document pack will help teachers prepare for and follow up a visit but it is also useful for teachers wanting to introduce a variety of historical sources. Archive photographs, old maps, and plans, an invoice for toys, an extract from the 1861 census, accounts from the royal nurseries, letters and diaries of Queen Victoria and her family are all included. Where the original documents were handwritten a transcription is provided and there is a booklet of ideas for classroom use.

8 page book, card covers, A4 size, plus 39 sheets of facsimiles and transcriptions, 1986.
ISBN 1-85074-126-3
Price: £2.95
Quote Code: XN 09169

◀ See also Handbooks For Teachers

Revealing Lost Villages Wharram Percy
Malcolm Atkin and Ken Tompkins

A guide to this famous deserted medieval village in North Yorkshire outlining the development of the site from prehistoric times to its desertion in the 15th century and concentrating on the types of evidence used to reveal its history.
32 pages, card covers, landscape size, 8 1/4" x 7 1/2", 1986.
ISBN 1-85074-121-2
Price: £1.50
Quote Code: XQ 09189

Planning and Conservation: a case-study of Maiden Castle
Patrick Lavery and Chris Cooper

This booklet forms one of the units in the Geography 16-19 Project but it could feature in many other courses for the same age range. Using Maiden Castle, in Dorset, as a focus it deals with the pressures and conflicting interests which inevitably arise from increased

tourism and how these can be minimised by careful planning. Throughout there are exercises involving the students in group decision-making and individual role play.
28 pages, card covers, A4 size, 1988.
ISBN 1-582-17356-6
Price: £2.25
Published by Longman
Quote Code: XQ 09188

See also Videos ▶

VIDEOS

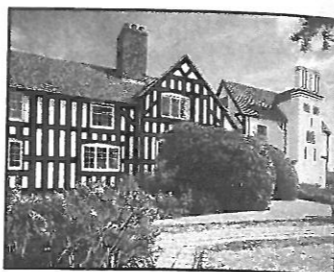
Our videos introduce sites and resources, and encourage investigative learning approaches by looking at physical evidence of the past. Many can be linked to visits to specific sites, either as part of preparation or follow-up. Some videos are for teacher training.



The Archaeological Detectives NEW

Archaeologists and historians often work like detectives, looking for clues to the past. Investigating buildings and monuments for evidence is a good way of encouraging children to use observation and interpretative skills. The video is the introduction to a proposed series and explains the 'ground rules' for this active learning method through two primary school children, Gemma and William. Three very different sites are investigated — Wroxeter Roman City in Shropshire, Orford Castle in Suffolk and Appuldurcombe House on the Isle of Wight.
Suitability: 9-13;
20 minutes; 1990.
Price: £9.95
Quote Codes: Sale XT 10110
Loan XU 10111

See also
◀ Handbooks for Teachers



Boscobel House NEW

Boscobel was an isolated Shropshire hunting lodge when the future Charles II fled there, hiding from the Parliamentarians in the famous oak tree, and in the house itself. The video looks at the facts of his escape, and how the remodelling of the house with romanticised additions by Victorian owners requires teachers and pupils to question closely the evidence visible to the eye, when visiting a site.
Suitability: 9-13;
10 minutes; 1990.
Price: £9.95
Quote Codes: Sale XT 09203
Loan XU 09222



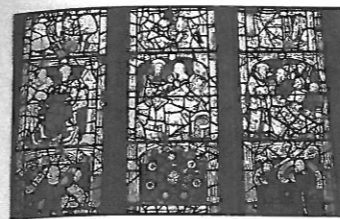
Building an Abbey: Rievaulx

Not a history of the abbey, nor about the life of a monk; this video explains in very simple terms the reasons why such a large building stands up. Medieval engineering and the maths of weight and strength are conveyed through a number of experiments performed by primary school children, all possible in the classroom. It provides a way of approaching technology through a historic building.
Suitability: 9-13;
14 minutes; 1988.
Price: £9.95
Quote Codes: Sale XT 09204
Loan XU 09223

See also
◀ Family Discovery Packs

Buildings and Beliefs NEW

For many schools the local church is not only the most local and accessible of archaeological resources, but also one which is



particularly rich in content. This film explores the potential of the parish church as a medium for the study of medieval social structure and spirituality. Attention is drawn both to the archaeology of the fabric and to what can be learned from changes in the use of space within the building.
Suitability: GCSE; 6th Form general studies; teacher training.
20 minutes; 1990.
Price: £9.95

Quote Codes: Sale XT 10213
Loan XU 10214

See also
◀ Handbooks for Teachers



Carey at Carisbrooke: how the Elizabethans modernised a castle

This video is intended for children visiting Carisbrooke Castle. The medieval castle is seen through the eyes of Carey, the 16th century governor of the Isle of Wight who had the task of modernising it. His modifications and the reasons for them are looked at and the video ends with some problems unresolved. It is then the task of pupils to look at the castle and provide Carey with the information he needs using the recording sheets provided. This video is also available for use in the Education Centre at Carisbrooke provided advanced booking is made.
Suitability: schools visiting Carisbrooke Castle, 9-13;
15 minutes; 1988.
Price: £9.95
Quote Codes: Sale XT 09205
Loan XU 09224

See also Handbooks For Teachers and Posters ▶



Chapels — The Buildings of Nonconformity NEW

This video investigates the many forms of nonconformist worship since the passing of the Act of Toleration in 1689, and asks what the archaeology of remaining buildings tell us about their relationship to the human and industrial landscape of villages and towns. Baptist and Unitarian chapels are compared with contemporary C of E chapels of ease or Quaker Meeting Houses. These are contrasted with the later Victorian grandeur of Methodist churches in cities like York.
Suitability: GCSE; 6th Form general studies; teacher training.
18 minutes; 1989.
Price: £9.95
Quote Codes: Sale XT 09207
Loan XU 09226



Castles of Northumberland

All over England castles were developed on similar lines to those in Northumberland which is particularly rich in examples, so the video will be useful throughout the country. Sections look at the siting of a castle and the different reasons they were built; 'Elements of a Castle'; 'Defending a Castle'; 'Looking at a Wall'; and 'A place to live in'. The video contains much helpful aerial photography, giving extra interpretive information to complement normal site visits.
Suitability: 9-13;
24 minutes; 1989.
Price: £9.95
Quote Codes: Sale XT 09206
Loan XU 09225

Grimes Graves

Grimes Graves in Norfolk, is the site of one of Britain's earliest industries — flint mining, and its associated craft of flint knapping. The video investigates the mines and looks for evidence of how the neolithic



miners extracted the flint. A professional flint knapper, John Lord, takes the viewer on a tour of the mines, including one of the deepest that is not open to the public. He demonstrates how the neolithic miners must have worked using antler picks to make an axe head.
Suitability: 9-13;
12 minutes; 1988.
Price: £9.95
Quote Codes: Sale XT 09208
Loan XU 09227

Also available with French commentary.



Dover Castle, The Key To England

The location of successive fortifications on the hills above Dover has made the town the first line of defence for these islands since the iron age. Using air photography, reconstruction drawings and actual footage of the castle's role in the second world war, the video explores how the defences have had to be continually modified as methods and means of war have developed.
Suitability: 11-16;
12 minutes; 1981.
Price: £9.95
Quote Codes: Sale XT 09209
Loan XU 09228

See also Posters ▶



Living History

This video has been made to accompany our book Living History in the Education on Site series. It outlines the various stages of setting up and carrying out living history projects at sites and in school. There are interviews with teachers as well as sequences of drama and role play projects.
Suitability: teacher training;
21 minutes; 1986.
Price: £9.95
Quote Codes: Sale XT 09210
Loan XU 09229

See also
◀ Education On Site



Looking at . . . series uses real sites to investigate the clues left behind in the buildings and monuments of the past. The viewer is asked to work out what the clues mean to help build up a picture. These films are useful introductions to some of our major monuments.

. . . an Abbey

This video shows how much we can learn from a typical Abbey if we understand how the Cistercian monks who lived there organised their lives.
Suitability: 11-13;
17 minutes; 1980.
Price: £9.95
Quote Codes: Sale XT 09211
Loan XU 09230

. . . a Castle

Uses the remains of the fortifications and domestic quarters of Goodrich Castle to explain the complex arrangements of life in a medieval castle through the investigation of clues left behind in the building.
Suitability: 11-13;
14 minutes; 1980.
Price: £9.95

years' during and after the Second World War are still vivid memories for many people. This book is a summary of the facts about food and rationing, with noteworthy recipes and many illustrations from contemporary sources. There is a special section for teachers, presenting ideas for classroom projects and experiments together with suggestions for further reading.
36 pages, card covers, A4 size, 1990.

ISBN 1-85074-288-X
Price: £3.50
Quote Code: XQ 09693

Food and Cooking in Britain

Jane Renfrew, Maggie Black, Peter Brears and Jennifer Stead

A series of seven books containing information on food, cooking equipment, serving meals and etiquette, together with a collection of recipes converted for the modern kitchen. The volumes are:

Food and Cooking in Britain (Set)
ISBN 1-85074-286-3
Quote Code: BK 3162

Prehistoric Britain Food and Cooking
ISBN 1-85074-079-8
Quote Code: BK 3703

Roman Food and Cooking
ISBN 1-85074-080-1
Quote Code: BK 3704

Medieval Food and Cooking
ISBN 1-85074-081-X
Quote Code: BK 3705

16th century Food and Cooking
ISBN 1-85074-082-8
Quote Code: BK 3706

17th century Food and Cooking
ISBN 1-85074-083-6
Quote Code: BK 3707

18th century Food and Cooking
ISBN 1-85074-084-4
Quote Code: BK 3708

Quote Codes: Sale XT 09212
Loan XU 09231

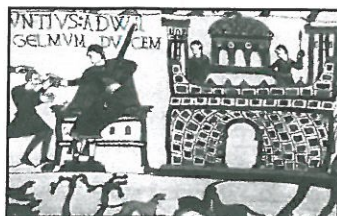
... Prehistoric Sites

The film shows the variety of sites in this enormously long period of our past and helps deal with sites that are often difficult to understand.

Suitability: 11-13;
20 minutes; 1982.

Price: £9.95

Quote Codes: Sale XT 09213
Loan XU 09232



special needs based at Kirby Hall and the date 1590 AD. The film plots the thinking behind the project, its preparation and follow-up. Sessions with teachers and pupils are recorded in schools and at Kirby Hall. The second part of the programme is devoted to a record of the day itself and would be suitable for showing pupils to help them picture the atmosphere of a 16th century day in a grand country house.

Suitability: First section: Teacher's courses, Special needs teachers. Second section: 9-13 age range;
38 minutes; 1988.

Price: £9.95

Quote Codes: Sale XT 09215
Loan XU 09234



The Norman Conquest of England

This video shows how effective the Norman conquest was. It altered not only building styles, but our landscape and language as well.

Suitability: 11-16;
15 minutes; 1982.

Price: £9.95

Quote Codes: Sale XT 09214
Loan XU 09233



Pickering Castle

This royal castle developed from motte and bailey earthworks into an impressive stone structure with shell keep and towers. The video shows its evolution through reconstructions and close examination of parts of the building. The life of the castle is also portrayed. Since many English castles resemble along similar lines the video will be useful throughout the country.

Suitability: 8-13;
14 minutes; 1986.

Price: £9.95

Quote Codes: Sale XT 09216
Loan XU 09235

The Past Replayed: Kirby Hall

English Heritage and Northamptonshire Education Authority worked on a living history project for children with

See also Posters ▶



Protectors of our Past

This video offers a short, vivid summary of the wide conservation involvements of English Heritage, including listed buildings, historic areas, scheduled ancient monuments, rescue archaeology, and specialist and technical advice. It features interviews and a case-study.

Suitability: GCSE; 6th Form general studies;
16 minutes; 1989.

Price: £9.95

Quote Codes: Sale XI 09161
Loan XU 09244



Rescuing our Past

This video introduces how archaeologists recover buried evidence of the past by excavation of an Anglo-Saxon cemetery. We see the main methods employed for deciding where to dig; the main techniques of excavation, including computers and electronic surveying; and how all the information gathered can be put together to give a picture of the people, their possessions, and the houses they lived in.

Suitability: 9-13;
12 minutes; 1988.

Price: £9.95

Quote Codes: Sale XT 09217
Loan XU 09236

Sitework

This programme shows the various uses that schools can make of an historic house as a resource for project work. Making drawings, prints, paintings, and creating poems are some of the more obvious approaches. An alternative approach would be to use its architecture as the basis for a mathematical investigation. We see the work done by the children and hear their own explanations about how they set about their interpretations.

Suitability: teacher training;
18 minutes; 1987.

Price: £9.95

Quote Codes: Sale XT 09218
Loan XU 09237

Working on the Evidence: Avebury

The aim of this video, which forms a useful accompaniment to the Teachers' Handbook, is to give teachers an idea of the varied opportunities which Avebury Circles and the nearby monuments offer. Children are shown investigating the sites, under the guidance of a teacher, and using the purpose-built Education Centre with its handling collection and displays. Scenes are included from a living history project which highlight the 18th century controversy over the breaking up of the stones.

Suitability: 9-13;
22 minutes; 1987.

Price: £9.95

Quote Codes: Sale XT 09219
Loan XU 09238

See also Handbooks For Teachers



Working on the Evidence: Maiden Castle

The video is about encouraging children to use their own imagination to take themselves back into the past and uses Maiden Castle to exemplify what archaeology is all about. We follow a group of primary pupils working on the evidence on site and in the local museum in Dorchester. Through a series of 'dis-solves' the children are transformed into their iron age equivalents who defended the fort and the Roman soldiers who stormed it, and Sir Mortimer Wheeler gives his vivid analysis of what took place.

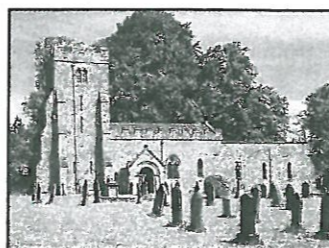
Suitability: 9-13;
21 minutes; 1987.

Price: £9.95

Quote Codes: Sale XT 09220
Loan XU 09239

Also available with French commentary

See also General Books



Your Church: a threshold to history

A guide for secondary school students to what you can observe and interpret from an ordinary parish church. Four specialists talk about their own approaches to exploring a graveyard, recording the fabric of a building with hi-tech, excavating beneath a church, and using landscape history. It is designed to be viewed in sections. Winner of a British Archaeological Award, 1988.

Suitability: GCSE level, 6th

form general studies, teacher training;
23 minutes; 1987.

Price: £9.95

Quote Codes: Sale XT 09221
Loan XU 09240

Living History — The Kenilworth Project

This has been produced by Elm Bank Teachers' Centre, Coventry as a record of a successful living history week held at Kenilworth Castle in conjunction with Coventry schools. The video includes interviews with teachers involved in the project about the organisation beforehand and film of the event itself.

Loan Only.

Quote Code: XU 09241

Alternatively, copies can be purchased (price £18.75 inc. postage) from Elm Bank Teachers' Centre, Mile Lane, Coventry CV1 2LQ.

Suitability: 9-13;
teacher training;

28 minutes; 1988.

Saving the Past for the Future

This short video offers a straightforward introduction to the varied activities of English Heritage, using examples from the North of England. It covers the range of properties in our care open to the public and our conservation work.

Suitability: GCSE; 6th Form general studies; teacher training;
9 minutes; 1988.

Loan Only.

Quote Code: XU 09242

Video Loans

All our videos are available on free loan to teachers for study use within the school or institution. Up to four titles can be borrowed at a time for a period of two weeks. The copies may then be purchased if you so wish, or returned.

Please note the separate code for loans when completing the request form opposite.

POSTERS

Castles and Later Fortifications

A set of nine full colour photographic posters with notes for teachers and suggested book list printed on the back.

Castles (set of 9)

Quote Code: XR 09405

Carisbrooke Castle
Quote Code: XR 09191

Deal Castle
Quote Code: XR 09192

Dover Castle
Quote Code: XR 09193

Fort Brockhurst
Quote Code: XR 09194

Kenilworth Castle
Quote Code: XR 09195

Pickering Castle
Quote Code: XR 09196

Portchester Castle
Quote Code: XR 09197

Tilbury Fort
Quote Code: XR 09198

Tynemouth Castle and Priory
Quote Code: XR 09199

680x480mm; full colour.

Price: £7.90 per set or £1.30 each.

Stott Park Bobbin Mill

Illustrates the story of how a bobbin was made.

A2 size, full colour.

Price: £1.30

Quote Code: XR 09200

SLIDE PACKS

Using Portraits
Susan Morris

This set of 12 slides complements our book, A Teachers' Guide to Using Portraits. The slides have been chosen to illustrate the range of material to be found in portraits. Accompanying notes discuss the various elements that can be examined, including clothing, facial expressions, pose and gesture, background and accessories, size, medium, composition, artistic style and technique as well as the social context of the work.

12 slides with 8 pages of teachers notes in plastic wallet, 1989.

ISBN 1-85074-260-X

Price: £3.25

Quote Code: XS 09201

See also Education on Site

Victorian Osborne

This set of 12 slides complements our Handbook for Teachers, Osborne House. The slides are all either archive photographs or 19th century paintings, some by Queen Victoria, of the Royal Family and their private home and estate on the Isle of Wight.

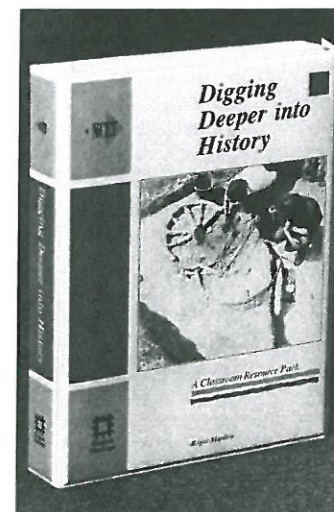
12 slides with 8 pages of teacher's notes in plastic wallet, 1987

Price: £3.25

Quote Code: XS 09202

See also Handbooks For Teachers

COMPUTER RESOURCES



Digging Deeper into History

A Classroom Resource Pack
Roger Martlew/NCET

This computer-based simulation explores the impact of a new gas pipeline on eastern Yorkshire. Although designed primarily for teaching history and archaeology, the simulation can also be used as part of a geography or environmental studies course. Using datafiles together with worksheets and resource cards, pupils investigate the impact of the different routes on archaeological sites, the landscapes etc and take on the different roles in planning applications before producing a report on their findings.

Compatible with BBC'B, BBC Master, RM480Z and RM Nimbus computers.

English Heritage/NCET, 1989
ISBN 1-85074-236-7

Price: £25.00 (orders of 10+ discount of £1 per pack).

Quote Code: XQ 09190

VIDEO LOANS ORDER FORM

Please send me the following videos on 2 week's free loan

Please tick ▶

VHS

BETA

| CODE NO | TITLE | Name (Mr/Mrs/Ms) |
|---------|-------|------------------------|
| X U | | Address |
| X U | | |
| X U | | Telephone No. Postcode |
| X U | | Date Required |

Send to: English Heritage, P.O. Box 229, Northampton NN6 9RY